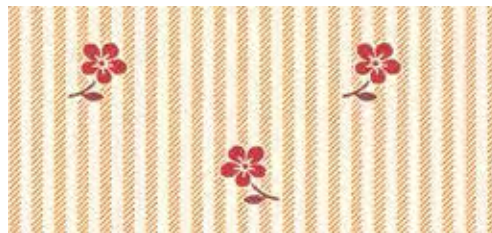


Little House on the Prairie Walnut Grove

BY KATHY HALL



Nine Patch Grove Quilt
designed by: **Lucy A. Fazely**
Quilt Size: 76 $\frac{3}{8}$ " x 76 $\frac{3}{8}$ "
andoverfabrics.com



LITTLE HOUSE ON THE PRAIRIE® and associated character names and trademarks are owned and licensed by Friendly Family Productions, LLC. All rights reserved. ©2015 Friendly Family Productions, LLC

andover



makower uk
The Henley Studio

Free Pattern Download Available

1384 Broadway New York, NY 10018
Tel. (800) 223-5678 • andoverfabrics.com

Nine Patch Grove Quilt



Introducing Andover Fabrics new collection:

Little House on the Prairie® – WALNUT GROVE by Kathy Hall

Quilt design by Lucy A. Fazely

Quilt finishes $76\frac{3}{8}" \times 76\frac{3}{8}"$

16 Blocks: $13\frac{1}{2}" \times 13\frac{1}{2}"$

This time-honored nine-patch variation block is just the kind of patchwork that Laura Ingalls' Ma might have pieced in that little house. You probably won't long for the "good old days" as you make this lovely quilt that is so, so easy to put together with our modern-day rotary cutters and machines.

Cutting Directions

Note: Read assembly directions before cutting patches. All measurements are cut sizes and include $\frac{1}{4}"$ seam allowances. A fat $\frac{1}{4}$ is an $18" \times 21"-22"$ cut. Borders are cut the exact lengths required plus $\frac{1}{4}"$ seam allowances. WOF designates the width of fabric from selvedge to selvedge (approximately 42" wide).

Fabric A Cut (3) squares $20\frac{3}{8}" \times 20\frac{3}{8}"$, cut in half diagonally twice to make 12 quarter-square side triangles
 Cut (2) squares $10\frac{1}{2}" \times 10\frac{1}{2}"$, cut in half diagonally to make 4 half-square corner triangles
 Cut (9) squares $14" \times 14"$

Fabric B Cut (8) strips $2\frac{1}{2}" \times$ WOF for binding
 Cut (64) squares $5" \times 5"$

Fabric C Cut (64) squares $2" \times 2"$

Fabric D Cut (256) squares $2" \times 2"$

8 Fat $\frac{1}{4}$'s From each:
 Cut (50) squares $2" \times 2"$

Backing Cut (2) panels $42" \times 84"$, pieced to fit quilt top with overlap on all sides

Fabric Requirements

		Yardage	Fabric
Fabric A	setting	$2\frac{1}{2}$ yards	7949-K
Fabric B	blocks, binding	$1\frac{7}{8}$ yards	7952-K
Fabric C	blocks	$\frac{1}{4}$ yard	7956-TL
Fabric D	blocks	$\frac{7}{8}$ yard	7958-NL
8 Prints	blocks	fat $\frac{1}{4}$ yard each	
	7953-N	7953-R	7953-T
	7954-RN	7955-N	7955-R
			7954-N
			7955-T
Backing		5 yards	7957-TK

Making the Quilt

1. Sew 4 Fabric C $2"$ squares with 5 squares of one of the Fat $\frac{1}{4}$ prints (Diagram 1). Repeat to make a second Unit Y like this. The unit should measure $5"$ square. If it does not, adjust your stitching and pressing.
2. Join 4 Fabric D $2"$ squares with 5 squares of the same Fat $\frac{1}{4}$ print used in Step 1 (Diagram 2). Make 7 more Unit Z like this.
3. Referring to the Block Diagram, join 1 Unit Y, 4 Unit Z, and 4 Fabric B $5"$ squares to make a block. Make a second block like this.

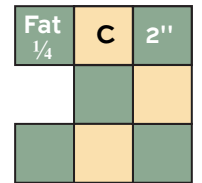


Diagram 1
 Unit Y – Make 2
 of each fat $\frac{1}{4}$ print

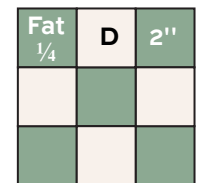
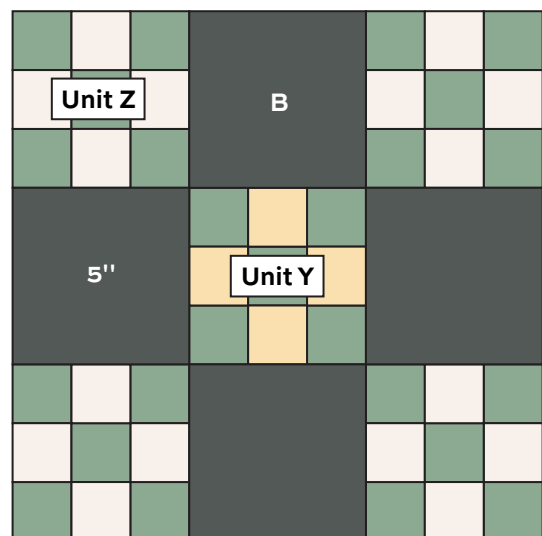


Diagram 1
 Unit Z – Make 8
 of each fat $\frac{1}{4}$ print



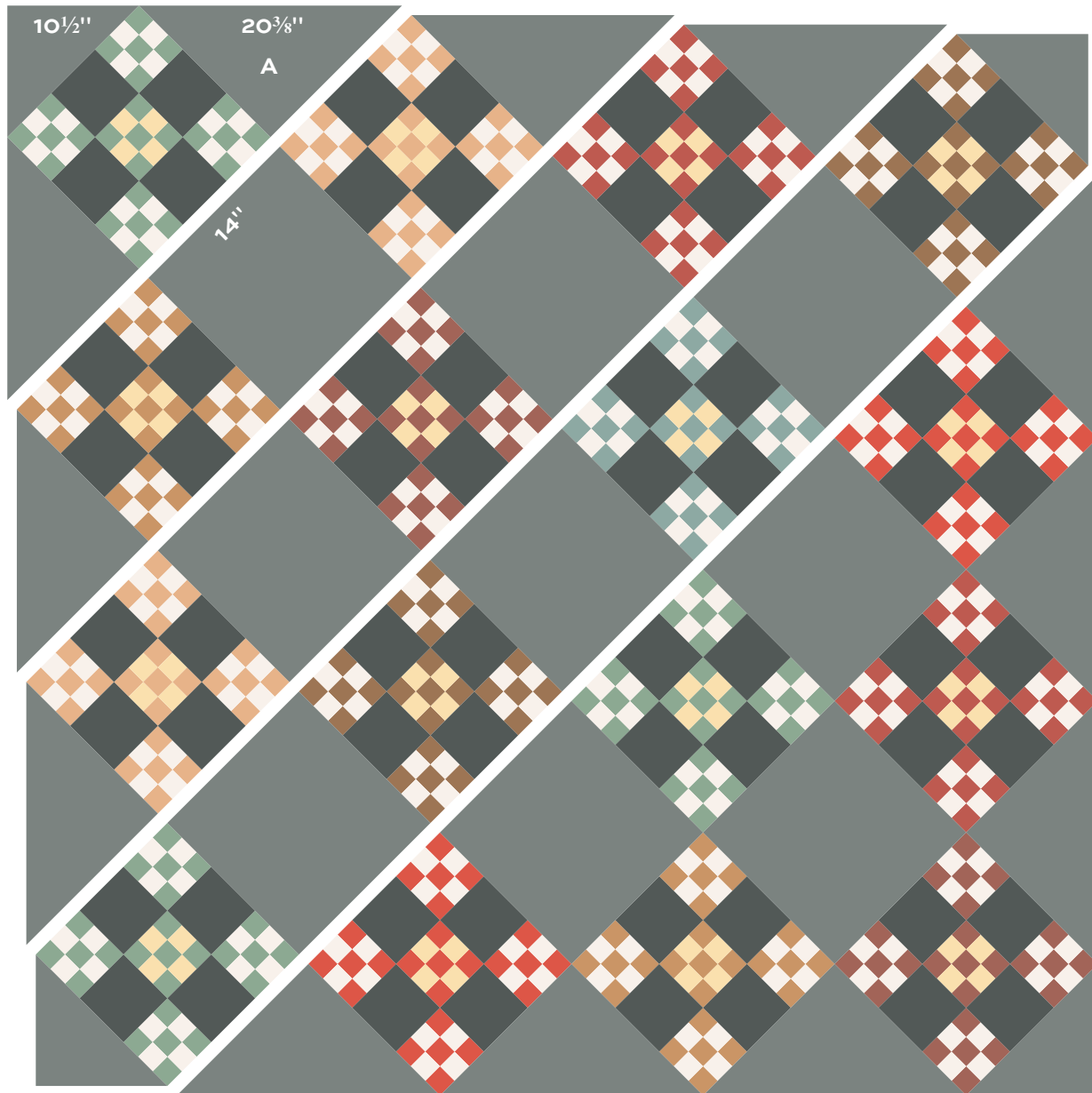
Block – Make 16

Nine Patch Grove Quilt

4. Repeat Steps 1-3 to make 2 blocks with each of the remaining Fat $\frac{1}{4}$ fabrics. Make a total of 16 blocks.
5. Referring to the Quilt Diagram, arrange the blocks, Fabric A squares, and Fabric A side and corner triangles into diagonal rows. Join the parts into rows, and then join the rows.

Finishing the Quilt

6. Layer the quilt with batting and backing and baste. Quilt in the ditch around block patches. Quilt the Fabric A patches as you wish. Bind to finish the quilt.



Quilt Diagram

Little House on the Prairie Walnut Grove



BY KATHY HALL



7953-N*



7953-R*



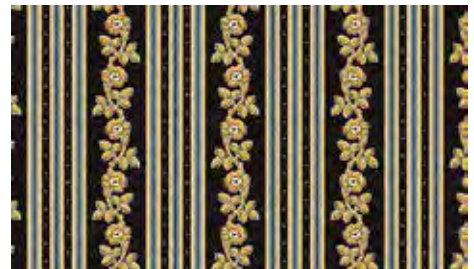
7953-T*



7954-N*



7954-RN*



7954-TK



7955-N*



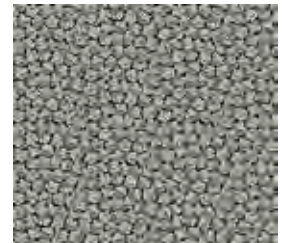
7956-N



7957-NR



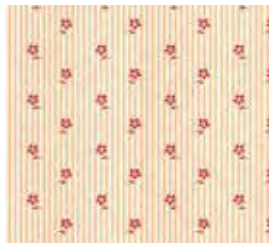
7958-NL*



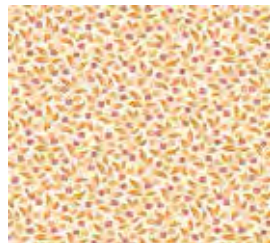
7949-K*



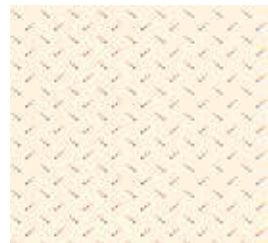
7955-R*



7956-RL



7957-RO



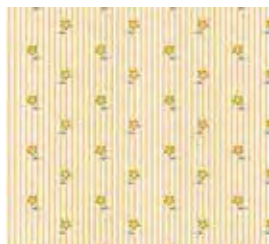
7958-RL



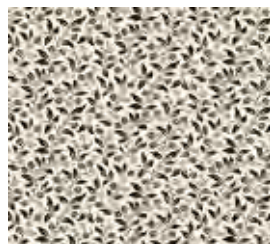
7952-K*



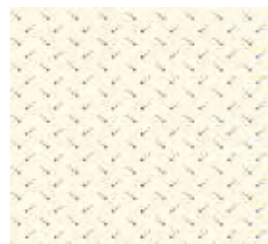
7955-T*



7956-TL*



7957-TK*



7958-TL

*Indicates fabrics used in quilt pattern.

Fabrics shown are 25% of actual size.

andover

•
•
• **makower uk**
• *The Henley Studio*

Free Pattern Download Available

1384 Broadway New York, NY 10018
Tel. (800) 223-5678 • andoverfabrics.com